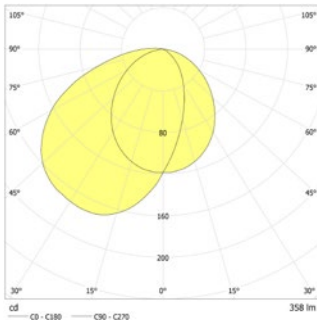


Luminaire with targeted light output. Robust trapezoidal luminaire housing for wall mounting made of powder-coated die-cast aluminium. High protection rating for outdoor installation. And optional cable entry at the side.



Technical data

Material:	die-cast aluminum powder-coated	Apparent power:	6,7 VA
Illuminant:	18 x 0,1W LED-module	Effective power:	5,6 W
Luminous flux:	358 lm	Inrush current:	6 A / 98 µs
Nominal voltage AC:	230V ±10% 50/60 Hz	Protection class:	I
Nominal voltage DC:	176 - 264 V	Input terminals:	2.5mm ² feed through wiring
Nominal current AC:	29 mA	Temperature ta:	-15...+40 °C
Nominal current DC:	22 mA	Impact resistance:	IK09



Wall mounting: Minimum illumination 1.0lx

	Distance to middle of escape route					
	1.0m		2.0m		3.0m	
1.0	2.6	6.3	2.4	6.1	1.1	4.7
1.5	3.2	7.7	3.1	7.7	2.5	7.0
2.0	3.6	8.8	3.6	8.9	3.2	8.5
2.5	4.0	9.7	4.0	9.9	3.7	9.6
3.0	4.3	10.5	4.3	10.7	4.2	10.5
3.5	4.5	11.1	4.5	11.4	4.3	11.2
4.0	4.6	11.7	4.7	12.0	4.5	11.9
4.5	4.8	12.2	4.8	12.5	4.7	12.4
5.0	4.8	12.6	4.9	12.9	4.8	12.9
5.5	4.9	12.9	5.0	13.2	4.8	13.2
6.0	4.9	13.1	5.0	13.5	4.9	13.5

Articles

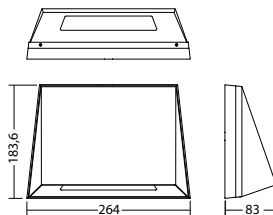
SN 6201 -03 LED J/SV

Colors	DB 703	HWF 7015	RAL 7015	RAL 9016	HWF 9016	HWF (special)
Art. no.	104355327	104355529	104355125	104355024	104355428	104355630

wall mounting

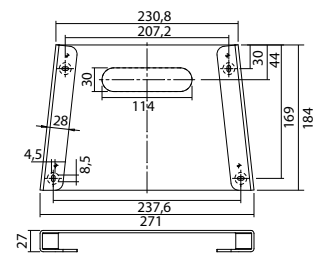
Light colour: 3000 K

Protection category:
IP65



mounting adapter 6201 RAL 7015

Art. no. 104575292



Name	Accessories	Art. no.
J-ET 5.1 SV-max. 24V DC320mA const.	spare part	101422893
LM 176x20 18/3K KL	spare part	104412113
mounting adapter 6201 RAL 7015	optional	104575292