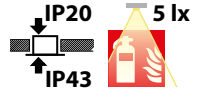


24V**SN 9024.1-03 AS Downlights**

For connection to INOTEC systems with 24V circuits

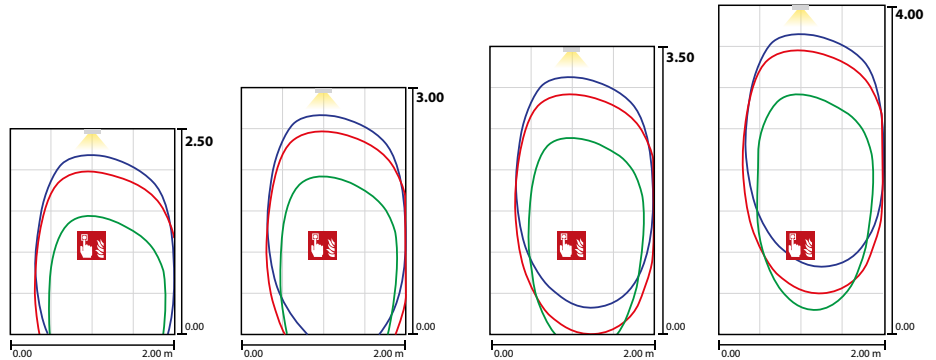
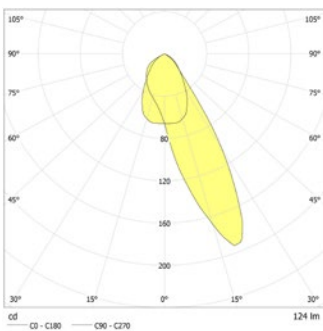


Discreet LED safety luminaire with optimised light distribution for the illumination of Places to be highlighted with 5lx vertical illuminance. Powder-coated aluminium cover with a diameter or edge length of no more than 45mm. Luminaire incl. driver for installation in ceiling cut-out of Ø 38mm.

**Technical data**

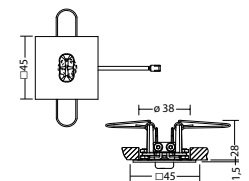
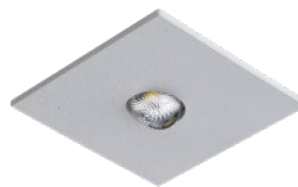
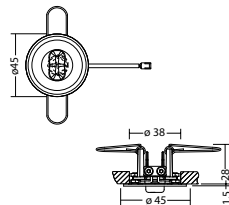
Illuminant:	1 x 0,9W LED-module
Luminous flux:	124 lm
Nominal voltage DC:	24 V ±25 %
Nominal current DC:	80 mA

Protection class:	III
Input terminals:	2.5mm ² feed through wiring
Temperature ta:	-15...+40 °C

**Articles**

SN 9024.1 -03 AS LED 24V round			
Colors	RAL 9005	RAL 9016	RAL (special)
Art. no.	102477567	102477062	102477163
recessed ceiling mounting	Light colour: 4000 K	Protection category: IP20	

SN 9024.1 -03 AS LED 24V square			
Colors	RAL 9005	RAL 9016	RAL (special)
Art. no.	104380080	104379979	104380181
recessed ceiling mounting	Light colour: 4000 K	Protection category: IP20	



ILD-Supply 24/4-CC-320 L ext.	Art. no. 104182444
required	

Name	Accessories	Art. no.
ILD-Supply 24/4-CC-320 L ext.	required	104182444
LM 24x21 1(3V)/4K KB300	Ersatzteil	104585804

