

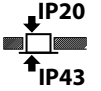
24V

# SN 9024.1-03 SLB Downlights

For connection to INOTEC systems with 24V circuits

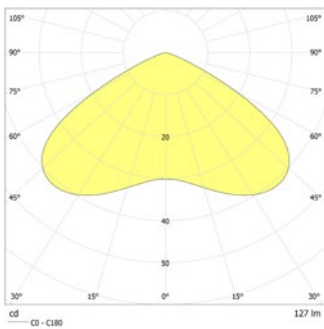


Discreet LED safety luminaire with optimised light distribution for the illumination of areas. Powder-coated aluminium cover with a diameter or edge length of no more than 45mm. Luminaire incl. driver for installation in ceiling cut-out of Ø 38mm.



## Technical data

<b>Illuminant:</b>	1 x 0,9W LED-module	<b>Protection class:</b>	III
<b>Luminous flux:</b>	127 lm	<b>Input terminals:</b>	2.5mm <sup>2</sup> feed through wiring
<b>Nominal voltage DC:</b>	24 V ±25 %	<b>Temperature ta:</b>	-15...+40 °C
<b>Nominal current DC:</b>	80 mA		

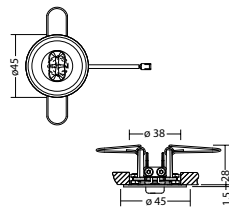


Minimum illumination 1.0lx (area illumination),  
Maintenance factor 0.8

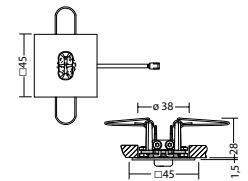
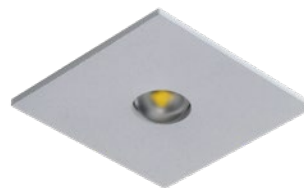
Beam diameter (m)	Beam diameter (m)	Beam diameter (m)
2.5	2.2	6.8
3.0	2.3	7.4
3.5	2.5	8.0
4.0	2.6	8.4
4.5	2.5	8.6
5.0	2.4	8.2

## Articles

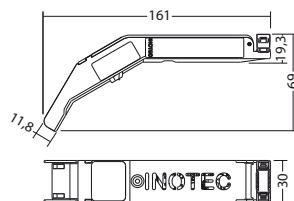
SN 9024.1 -03 SLB LED 24V round			
Colors	RAL 9005	RAL 9016	RAL (special)
Art. no.	102477466	102476860	102476961
recessed ceiling mounting	Light colour: 4000 K	Protection category: IP20	



SN 9024.1 -03 SLB LED 24V square			
Colors	RAL 9005	RAL 9016	RAL (special)
Art. no.	104379676	104379575	104379777
recessed ceiling mounting	Light colour: 4000 K	Protection category: IP20	



ILD-Supply 24/4-CC-320 L ext.	Art. no. 104182444
required	



Name	Accessories	Art. no.
ILD-Supply 24/4-CC-320 L ext.	required	104182444
LM 24x21 1(3V)/4K KB300	Ersatzteil	104585804