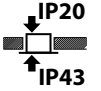
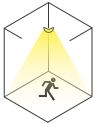




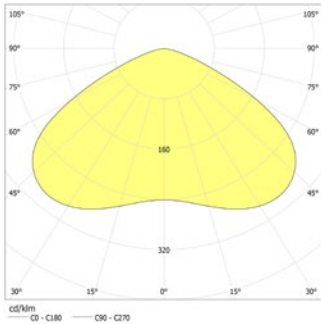
Discreet LED safety luminaire with optimised light distribution for the illumination of areas. Powder-coated aluminium cover with a diameter or edge length of no more than 45mm. Luminaire incl. driver for installation in ceiling cut-out of \varnothing 38mm. Attention: When using 230V supply units, these cannot be installed via the \varnothing 38mm ceiling cut-out.



Technical data

Illuminant:	1 x 3,5W LED-module
Luminous flux:	498 lm
Nominal voltage AC:	230V \pm 10% 50/60 Hz
Nominal voltage DC:	176 - 264 V
Nominal current AC:	31 mA
Nominal current DC:	26 mA

Apparent power:	7,2 VA
Effective power:	6,0 W
Inrush current:	8 A / 50 μ s
Protection class:	II
Input terminals:	2.5mm ² feed through wiring
Temperature ta:	-15...+40 °C



Ceiling mounting: Minimum illumination 1.0lx (middle of escape route), Maintenance factor 0.8

Distance (m)	2.5m	5.4m	12.8m
2.5	5.4	12.8	
3.0	5.8	13.8	
4.0	6.3	15.5	
5.0	6.4	16.7	
6.0	6.2	17.7	
7.0	5.8	18.1	
8.0	4.7	17.9	
9.0	4.4	17.9	

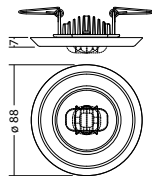
Minimum illumination 1.0lx (area illumination), Maintenance factor 0.8

Distance (m)	2.5m	3.3m	8.1m
2.5	3.3	8.1	
3.0	3.7	9.6	
4.0	4.3	11.0	
5.0	4.5	13.2	
6.0	4.5	14.6	
7.0	4.3	15.7	
8.0	3.9	16.5	
9.0	3.1	17.2	

Articles

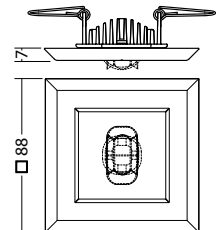
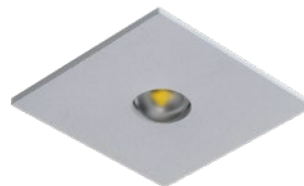
SN 9024.1 -12 SHB LED J/SV			
Colors	RAL 9005	RAL 9016	RAL (special)
Art. no.	104826583	104826482	104826684

recessed ceiling mounting Light colour: 4000 K Protection category: IP20



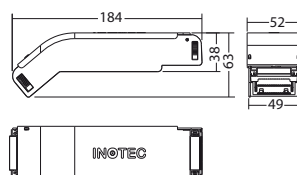
SN 9024.1 -12 SHB LED J/SV			
Colors	RAL 9005	RAL 9016	RAL (special)
Art. no.	104826886	104826785	104826987

recessed ceiling mounting Light colour: 4000 K Protection category: IP20



LED-Supply 230-3 J-SV SK IIext. Art. no. 101436536

required



Name	Accessories	Art. no.
FLD-Supply 230/4-CC-320 L ext.	required	102204856
ILD-Supply 24/4-CC-320 L ext.	required	104182444
LED-Supply 230-3 J-SV SK IIext.	required	101436536
LM 24x21 1(12V)/4K KB300 LED Modul	spare part	104828506